

The Beauty of Wood



Only the finest solid wood and wood veneers are selected for the construction of Premier Cabinetry. Techniques, such as physical distressing and hand rubbed glazing, offer the look of antique furniture. In addition, our 18 step finishing process enhances and protects the true beauty of the wood grain.

The Premier selection of woods include subtle, even grained Maples, rich textured Oaks and rustic Hickory—known for its cross-the-board color variations and strong grain patterns. Deviations in color and grain contribute to the natural beauty of wood, and as a result, there are no two pieces that are exactly the same—Making every kitchen unique.



Dependable... Flexible... Durable...

Impressive styling, rich wood grains, convenient accessory options and exceptional value are all essential ingredients of the Premier line of cabinetry...but we did

not stop there. Attention to detail, quality craftsmanship and top-of-the-line construction are of the utmost importance.

Premier Cabinetry is built to last and we support this quality statement with a Limited Lifetime Warranty, which guarantees our products for as long as you own your home.

Premier cabinets feature Open-Frame Construction, which offers full access to your cabinet interior for the storing of

large items and for easy cleaning. Other features, usually offered as upgrades, but standard in our cabinetry include: Full Overlay Doors & Concealed Hinges—to

provide a seamless, custom appearance, Extra Thick Construction—to support heavy items such as Granite countertops, Wideline Drawer Box—to provide additional

storage, and Metal Shelf Supports—to offer maximum strength and protection for your valuables.

Having the flexibility to select the storage and accessory options that meet your individual needs is important when designing a new kitchen. Premier recognizes the need for practical, space saving solutions and offers many options including: Stain Resistant Easy To Clean Interiors, Full Extension Drawer System—allowing access to the entire drawer box, Slide-Out Trays—bringing everything within easy reach and Pot & Pan Storage Cabinets—for those large, hard to store items.



Building the Dream

So now you're feeling inspired by the possibilities... eager with anticipation... and possibly a bit overwhelmed!

Relax! We want you to think of the Kitchen Designers at Home Depot as your personal assistants. They'll ask you to complete a detailed Planning Design Guide so they can work with you to create your design.

But before your consultation, take a few minutes to sort through your ideas. Prepare a cup of tea, grab a pen, and head to your favorite chair to jot down your thoughts.

Once on paper, it will all start to fall into place and you'll be ready to bring your new kitchen to life!

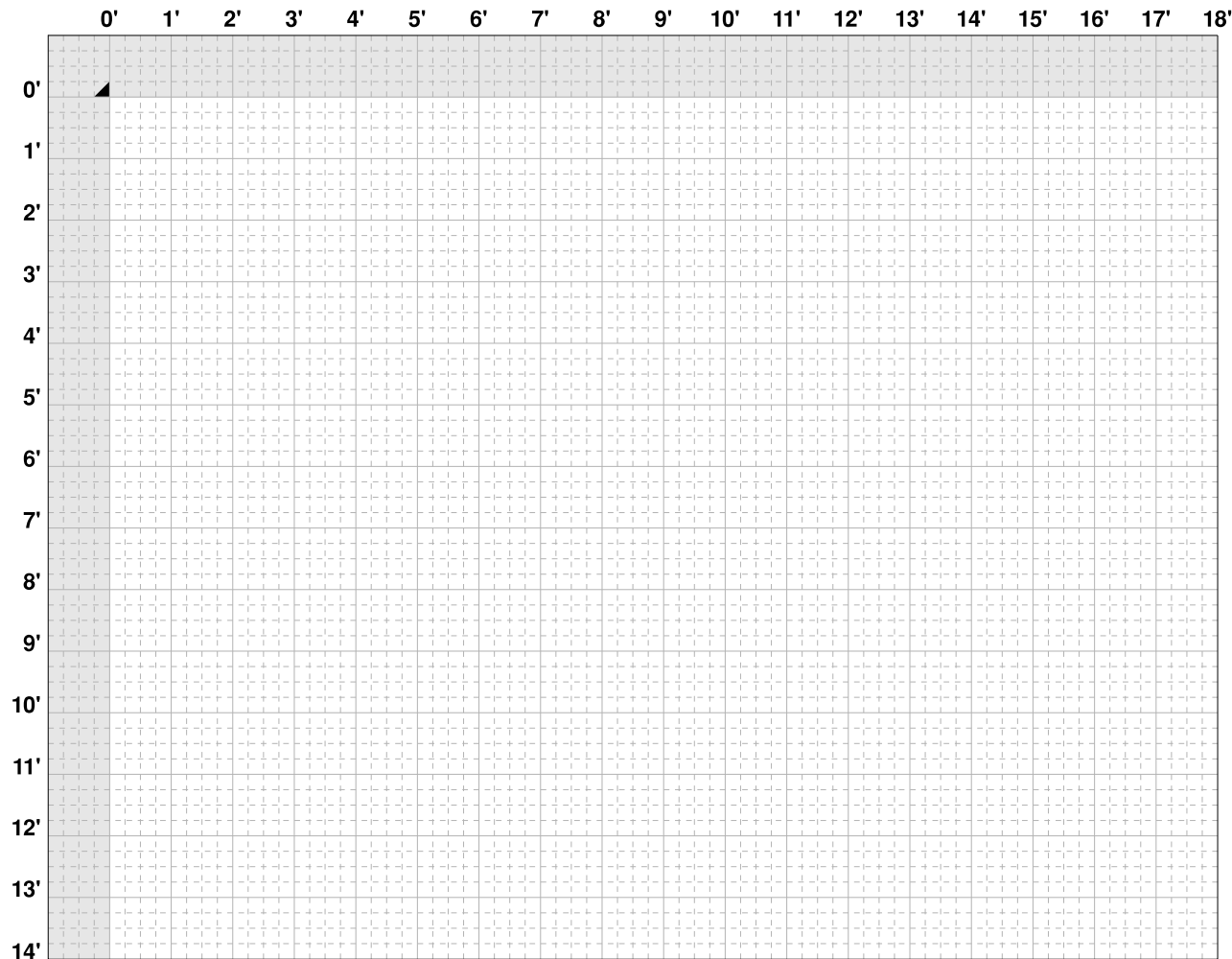


The first step toward designing your new Premier kitchen is to measure your room.
Use the guidelines below to help you through the measuring process.

How To Measure:

1. Draw a birds-eye view of your kitchen using the supplied grid sheet.
2. Measure every wall, left corner to right corner. Record measurements in inches on your sketch.
3. Measure from left corner to the edge of openings: windows and doors. Record measurements on your sketch.
4. Measure across openings (doors or windows) from outer trim edge to outer trim edge. Record measurements in inches on your sketch.
5. Measure from right trim edge of opening to far wall. Record measurement in inches on your sketch. For doors, indicate direction of door swing.
6. To check accuracy, the measurements from steps 3, 4, and 5 when added together should agree with total measurement from step 2.
7. Repeat this process on all four walls.
8. Measure the height of your room — from floor to ceiling.
9. Measure windows — from floor to windowsill, from windowsill to top of window frame, from top of window to ceiling. When added together these three measurements should equal your measurement of the total height of the room.
10. Measure doors, from floor to top of door jam, from top of door jam to ceiling. When added together these two measurements should equal your measurement of the total height of the room.
11. Mark exact location of sink, water lines, drain, gas lines, electrical outlets, and switches on the drawing.
12. Measure stove (width and height), refrigerator, microwave, dishwasher, and sink widths and heights and list on your sketch.

Large squares = 1' Small squares = 3"

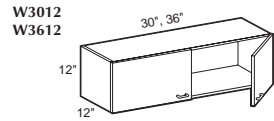


Now that you know the dimensions of your room, you are ready to sit down with your Home Depot Designer and make your Premier dream kitchen a reality!

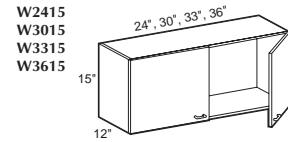
SPECIFICATIONS AND SIZES

Wall cabinets can be ordered with matching interior.
For single door cabinets specify right or left hinge (R or L)
 Can be ordered with glass doors

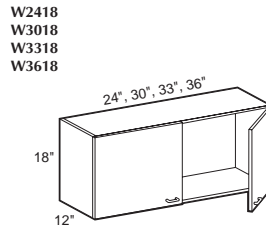
12" High Double Door



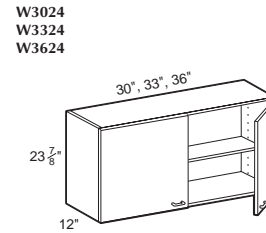
15" High Double Door



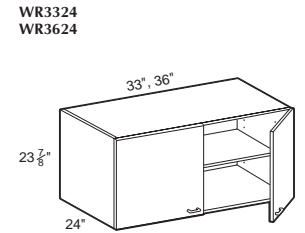
18" High Double Door



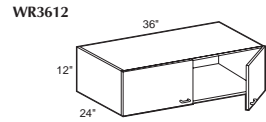
24" High Double Door



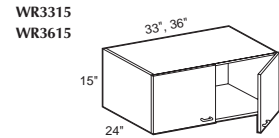
24" High x 24" Deep Wall Refrigerator



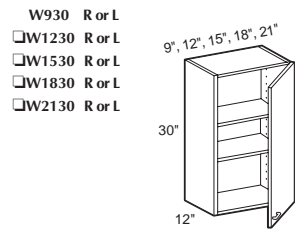
12" High x 24" Deep Wall Refrigerator



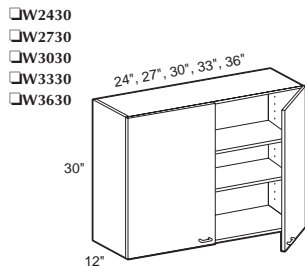
15" High x 24" Deep Wall Refrigerator



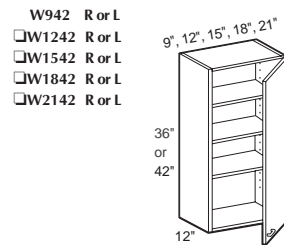
30" High Single Door



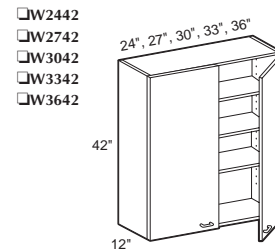
30" High Double Door



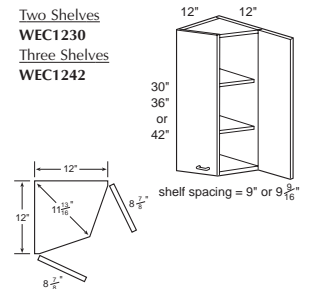
42" High Single Door



42" High Double Door

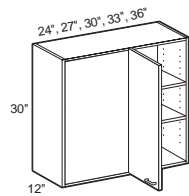


30"/42" High Wall End Corner



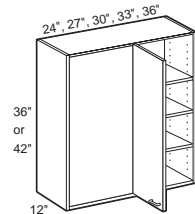
30" High Wall Blind Corner

- WBC2430 R or L WBC3330 R or L
 WBC2730 R or L WBC3630 R or L
 WBC3030 R or L



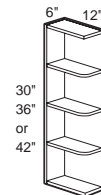
42" High Wall Blind Corner

- WBC2442 R or L WBC3342 R or L
 WBC2742 R or L WBC3642 R or L
 WBC3042 R or L



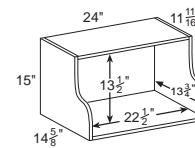
30"/42" x 12" Deep Wall End Open Shelf

- Three Shelves
WEO5630
(3) 9" Sections
- Four Shelves
WEO5642
(4) 9 9/16" Sections



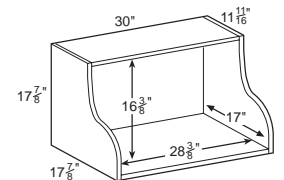
15" High x 15" Deep Wall Microwave Shelf

WMS241515



18" High x 18" Deep Wall Microwave Shelf

WMS301818



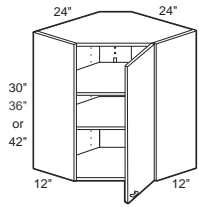
The cabinets and accessories shown on these pages are samples of available Premier Cabinetry. Please see your Home Depot associate for further information.

SPECIFICATIONS AND SIZES

30"/42" High x 12" Deep Wall Angle

Two Shelves
□JWA2430 R or L

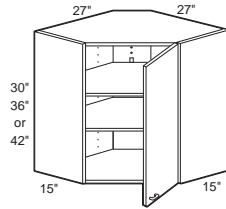
Three Shelves
□JWA2442 R or L



30"/42" High x 15" Deep Wall Angle

Two Shelves
□JWA2730 R or L

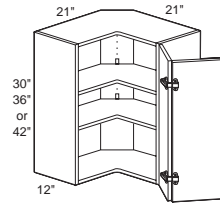
Three Shelves
□JWA2742 R or L



30"/42" High x 12" Deep Wall Easy Reach

Two Shelves
WEZR2130 R or L

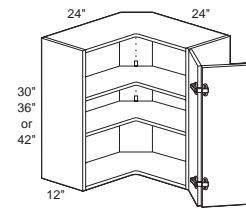
Three Shelves
WEZR2142 R or L



30"/42" High x 12" Deep Wall Easy Reach

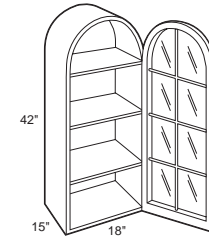
Two Shelves
WEZR2430 R or L

Three Shelves
WEZR2442 R or L



42" High x 15" Deep Wall Dome Top

WDT181542 R or L



Note: Supplied with glass door

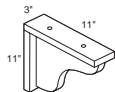
24" High Classic Range Hood Front

CRHF3024



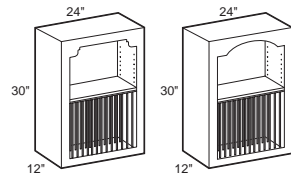
Countertop Support

CTS



30" High x 12" Deep Wall China Display

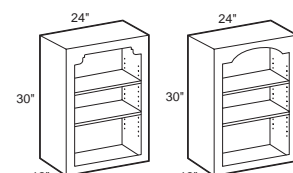
WCD2430



Corbel Frame Shaker Frame

30" High x 12" Deep Wall Open Cabinet

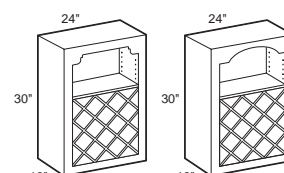
WOC2430



Corbel Frame Shaker Frame

30" High x 12" Deep Wall Wine Display

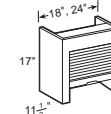
WWD2430



Corbel Frame Shaker Frame

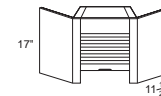
17" High x 11 1/2" Deep Tambour Storage

TS18
TS24



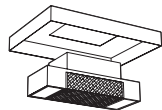
17" High x 11 1/2" Deep Tambour Storage Angle

TSA2417



Range Hood Vented Fan

RHVF30



Range Hood Recirculating Fan (Ductless)

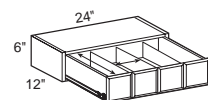
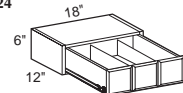
RHRF30



6" High x 12" Deep Spice Drawer Cabinet

Three Compartments
SDC18

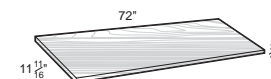
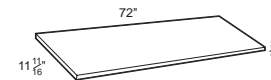
Four Compartments
SDC24



Furniture Shelves

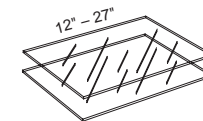
Melamine
FS 72

Wood Veneer
WFS 72



Glass Shelf Kit

GLSK12
GLSK15
GLSK18
GLSK21
GLSK24
GLSK27
GLSK1815*



The cabinets and accessories shown on these pages are samples of available Premier Cabinetry. Please see your Home Depot associate for further information.